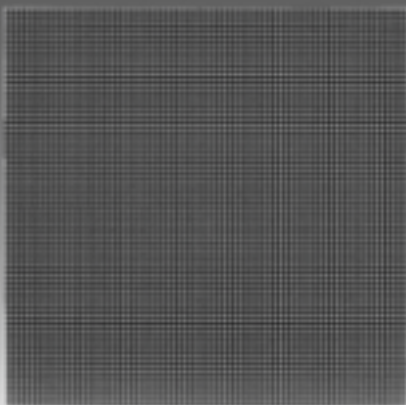
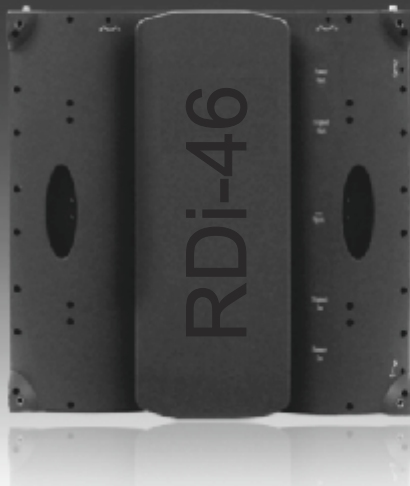


Rental frame Die-casted RD-Series



RDi-46 indoor

Technical specifications

| | |
|-------------------------------------|--|
| Diode - | SMD 3>1 : 2724 (Black Face, Black body) |
| Pixel pitch | 4,615 mm |
| Module resolution | 80 (W) *80(H) |
| Pixel composing | 1R1G1B (3in1) |
| Pixel density | 46.952/m ² |
| Scan mode | 1/13 Scan |
| Refresh frequency | >3800 HZ |
| Grey process : | 16 BIT |
| *(According to system and IC equip) | |
| Cabinet size : | 480mm*480mm |
| Brightness | 1600cd/ m ² |
| Color temp | 8000K±500 (Optional) |
| View angle | H140° / V140° |
| Best view | 4 m. |
| Working voltage | AC 220V±10% |
| Max. consumption | 150W/pcs |
| Aver consumption | 80W/pcs (depending on video frequency) |
| Life time | 50000hours |
| Work temp | -10 ~ +50 |
| Weight | 8.5Kg/pcs |

